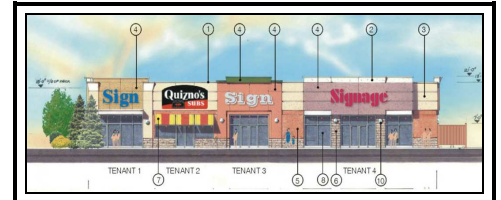




PRIME DESIGN BUILD  
CORPORATION

Where the Building Begins.



## Building C

Cobourg, Ontario

**CLIENT:**

*Royal Cobourg  
Centres Limited*

**CONSULTANT:**

*Thomas Gluck  
Architect Inc.*

**CONTRACT TYPE:**

*Design Build*

**DURATION OF PROJECT:**

*3 Months*

**PROJECT SIZE:**

*8,300 sq. ft.*

Located in a growing shopping center area in Cobourg Ontario, this retail plaza building was designed and built by Prime Design Build Corporation to finish off the corner of an established Wal-Mart development site.

After the tendering of this project; Prime Design Build worked with the Client on value engineering to achieve the client's financial objectives.

Proper planning and design resulted in an attractive functional building for the Client's retail Tenants.

