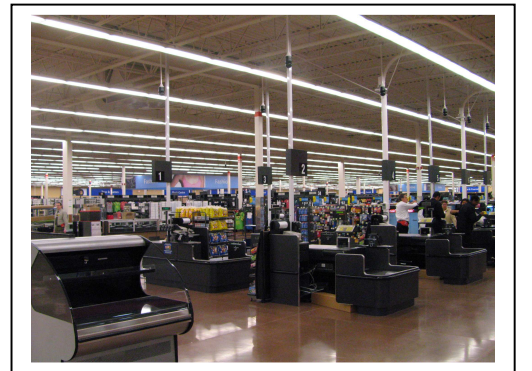




PRIME DESIGN BUILD
CORPORATION

Where the Building Begins.



Building A – Wal-Mart

Oshawa, Ontario

CLIENT:

Oshawa South Developments

CONSULTANTS:

*Petroff Partnership Architects
Counterpoint Engineering*

CONTRACT TYPE:

Firm Price

DURATION OF PROJECT:

5 Months

PROJECT SIZE:

220,000 sq. ft.

The Oshawa Wal-Mart Superstore was awarded to Prime Design Build in November 2006 but construction start was delayed to June 2007 due to permit issues.

The owner asked Prime Design Build to take about 4 weeks off the schedule in order to turnover the building for opening on time.

Prime Design Build agreed to do this and through a very concentrated and co-operative team effort the building and siteworks were able to be completed to meet the stakeholders' needs while meeting or exceeding the required safety and quality standards.